

Release Announcement: AVL LYNX 2™ R5.5

Explore the tools and features that make AVL LYNX the heart of your lab



We are pleased to announce the latest release of AVL LYNX, the industry's leading battery test automation platform, now provides enhanced features to make the most of rapid acquisition and monitoring.

These new features simplify lab operations by consolidating all control and data acquisition under one common and easy-to-use interface.

Users can now leverage the following:

Native FEM Editor

- All parameter developing, editing, and channel mapping of your FEM 4 I/O can be defined directly within the LYNX Set-Up Mode application

Strict Time Mode

- Prevent lost CAN information by disabling CAN Strict Time Mode when too many messages were parameterized for the given environment.

Simplified In-Time Configuration

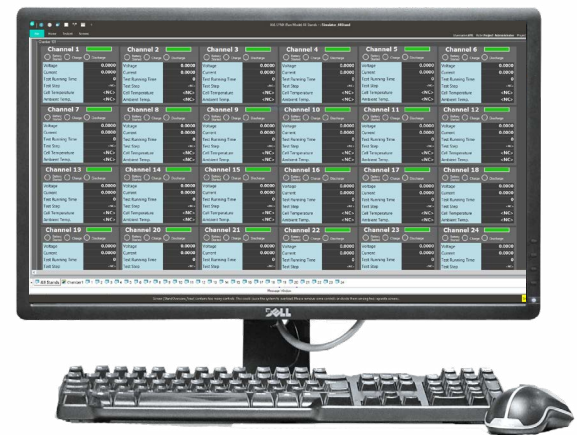
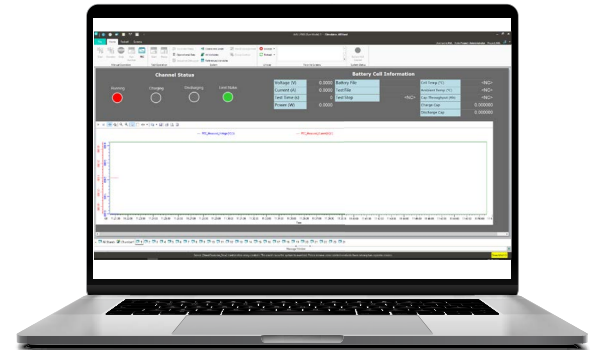
- Leverage a fully automated process for setting up PCIe cards with the real-time system during installation.

AVL CT Eco-Line Cyclers

- AVL LYNX 2™ R5.5 introduces integrated driver support for the AVL CT Eco-Line Cycler.
- This cycler uses CAN for its communication and supports running its channels in independent or parallel configurations.

72 Channels per LYNX Workstation:

- Starting with the 5.5 release, LYNX supports 100Hz control and data acquisition on as many as 72 UUT channels simultaneously on a single LYNX workstation, saving expense, and maximizing space in your facility.
- Group management controls provide simplified management and viewing of channel information.



GET IN TOUCH

Ready to learn more?

Get in touch with our team today for further release details.

CONTACT US

AVL
47519 Halyard Drive
Plymouth, MI 48170

Scott Dunmire, Group Product Manager
E-mail: Scott.Dunmire@avl.com
Phone: 248-207-8680

www.avl.com